



■ Power Station Control Systems

ME-DRP 5

The new face of engineering



Intelligent

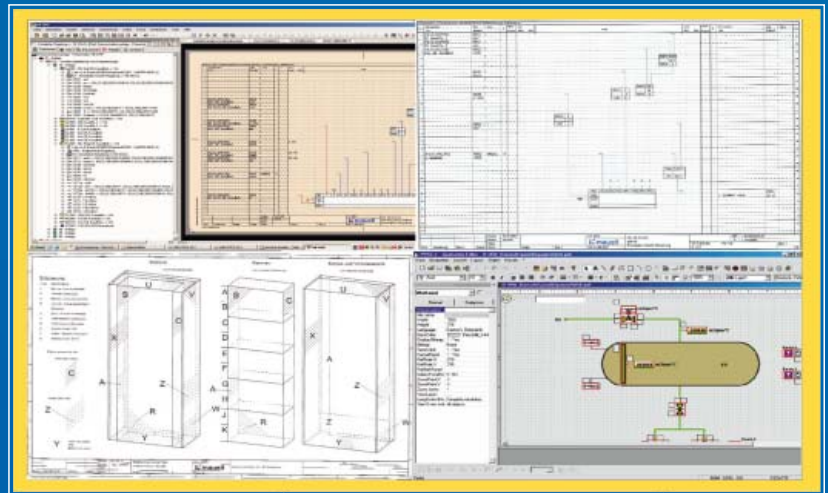
due to expanded CAE functionality, offering complete design capabilities required for successful process control solutions in power stations

Streamlined

due to easy-to-use user interface with object-oriented project database – for the consistent documentation of function planning, hardware configuration and circuit diagrams, the creation of the plant configuration, and for online diagnosis

Fast

due to integrated library of highly advanced function blocks supporting you in the design of modern control/feedback control strategies for efficient plant control and a high degree of automation.



The ME-DRP 5 Engineering System supports designers of process control equipment in plant manufacturing and energy supply companies as well as in engineer's offices that create documentation according to VGB PowerTech guideline R 170 C.

